

# Street Tree Care and Maintenance

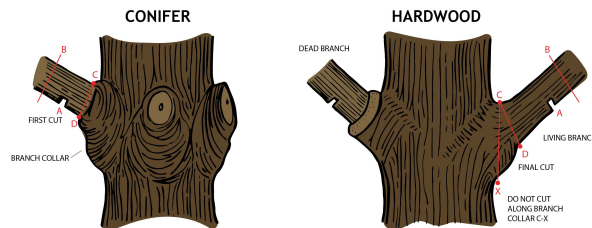
Species type and planting guidelines are regulated by several factors such as easements, utility obstruction, species, and location of nearby intersections and signs.

## Street tree planting requirements:

- A permit must be obtained from the Urban Forester. Call 425-2558 or go to [www.LexingtonKY.gov/forestry](http://www.LexingtonKY.gov/forestry).
- Tree must be a desired species listed in the Division of Planning Planting Manual or approved by the Urban Forestry Program.
- Suggested spacing between trees: 45 feet (large trees); 35 feet (medium trees); 25 feet (small trees).
- Minimum planting area between sidewalk and street: 7 feet (large tree) and 5 feet (medium tree); this may be altered upon approval by the Urban Forester or planted inside sidewalk with permission.
- Trees must be planted at least 50 feet from stop or yield signs, 25 feet from other signs and 10 feet from hydrants.
- Trees planted must be at least 1 3/4 inches in diameter.

**NOTE:** Only small trees should be planted under overhead power lines.

## Proper Tree Pruning



Pruning cuts should be made just outside the branch collar. Do not trim branches flush to the tree trunk or limb. For more on pruning, go to [www.LiveGreenLexington.com](http://www.LiveGreenLexington.com)

## Proper Tree Mulching



**Correct Mulching**      **Incorrect Mulching**

The recommended mulching depth is 1 to 3 inches. Spread mulch out to the tree's drip line or beyond. Avoid placing or "coning" mulch against tree trunks. Piling mulch against the trunk can cause stress to the tree and lead to insect and disease problems.

## Tree Maintenance Tips

- Prune limbs to a height of at least 7 feet above sidewalks and 12 feet above streets.
- Remove dead or diseased wood.
- Topping of street trees is **PROHIBITED**.
- Trees should be properly mulched and watered.
- Most trees under 10 feet do NOT need to be staked. Staking can actually harm the tree.
- Planting and tree maintenance should be performed by arborists certified by the International Society of Arboriculture.

## Lexington is a proud



**TREE CITY USA®**

## community

For more information on Lexington's Urban Forestry Program, street tree permits or for additional copies of this brochure, call us at 425-2558 or send an email to: [urbanforestry@LexingtonKY.gov](mailto:urbanforestry@LexingtonKY.gov)

Check us out online at: [www.LexingtonKY.gov/forestry](http://www.LexingtonKY.gov/forestry)

# Lexington Street Tree Guidelines



## Understanding City Street Tree Requirements, Permitting, Maintenance and Removal Procedures

Lexington-Fayette  
Urban County Government  
200 East Main Street  
Lexington, Kentucky 40507

PRINTED ON RECYCLED PAPER

Revised December 2016



**LEXINGTON**

# Street Trees - A Benefit for the Community & the Environment

Street trees benefit you and the community in many ways. They add character to our neighborhoods, cool our homes and cities, clean our air, reduce stormwater runoff, increase property values, attract wildlife, and give us aesthetic beauty.

Property values are generally five to 20 percent higher if there are trees on the property. It makes good sense to properly care for and manage your street trees.

Chapter 17B of the Code of Ordinances, which regulates street trees in Fayette County, is administered by the Urban Forestry Program. This brochure explains the law and how street trees are to be maintained.

## Who is responsible for street trees?

The answer is ... **You are!**

Street trees are regulated because they affect road usage, however, the care and maintenance of street trees are the *property owner's responsibility*.

The city does not maintain, plant, or replace street trees.

If a street tree is removed, property owners are required to replace the tree with a suitable species within one year. Violation of the ordinance could result in a citation.

## Approved Street Trees: Refer to Planting Manual for full list of approved species

### LARGE TREES (over 50 feet tall)

- **American basswood (Tilia americana)**
- **American beech (Fagus grandifolia)**
- **American elm (Ulmus americana) only Dutch elm disease resistant varieties**
- **baldcypress (Taxodium distichum)**
- **chinkapin oak (Quercus muehlenbergii)**
- European larch (Larix decidua)
- ginkgo (Ginkgo biloba) fruitless cultivars only
- Japanese zelkova (Zelkova serrata)
- lacebark elm (Ulmus parvifolia)
- London planetree (Platanus x acerifolia)
- **Kentucky coffeetree (Gymnocladus dioicus) fruitless cultivars only**
- **northern red oak (Quercus rubra)**
- **scarlet oak (Quercus coccinea)**
- **shingle oak (Quercus imbricaria)**
- **Shumard oak (Quercus shumardii)**
- **swamp white oak (Quercus bicolor)**
- **sweetgum (Liquidambar styraciflua)**
- **sugar maple (Acer saccharum)**
- **sugarberry (Celtis laevigata)**
- **tulip poplar (Liriodendron tulipifera)**
- **water oak (Quercus nigra)**
- **willow oak (Quercus phellos)**
- **white oak (Quercus alba)**

**NOTE: Native species are displayed in bold.**

*Planting of species not on the approved list may be allowed with approval of the Urban Forester.*

*For a complete list of acceptable species, please refer to the Planting Manual available online at: [LexingtonKY.gov/urban-forestry](http://LexingtonKY.gov/urban-forestry).*

### MEDIUM TREES (25-50 feet tall)

- **Allegheny serviceberry (Amelanchier laevis)**
- amur maackia (Maackia amurensis)
- **black gum (Nyssa sylvatica)**
- **Carolina silverbell (Halesia tetraptera)**
- hardy rubber tree (Eucommia ulmoides)
- hedge maple (Acer campestre)
- **hophornbeam (Ostrya virginiana)**
- Japanese pagoda (Styphnolobium japonicum)
- Japanese snowbell (Styrax japonicus)
- Japanese tree lilac (Syringa reticulata)
- katsuratree (Cercidiphyllum japonicum)
- littleleaf linden (Tilia cordata)
- Persian parrotia (Parrotia persica)
- **thornless honeylocust (Gleditsia triacanthos var. inermis)**
- trident maple (Acer buergerianum)
- Turkish filbert (Corylus colurna)
- **yellowwood (Cladrastis kentukea)**

### SMALL TREES (10-15 feet tall)

- **American hornbeam (Carpinus caroliniana)**
- amur maple (Acer ginnala)
- **crabapple varieties (Malus spp.)**
- **eastern redbud (Cercis canadensis)**
- **white fringetree (Chionanthus virginicus)**
- **flowering dogwood (Cornus florida)**
- **hawthorn varieties (Crataegus spp.)**
- Japanese cherry (Prunus spp.)
- kousa dogwood (Cornus kousa)
- red horsechestnut (Aesculus x carnea)
- tatarian maple (Acer tataricum)

**Prohibited Street Trees:**  
Trees that produce large and/or messy fruit or are structurally weak are not allowed as street trees.

- all flowering pears (Pyrus calleryana)
- ash varieties (Fraxinus spp.)
- birch varieties (Betula spp.)
- box elder (Acer negundo)
- catalpa varieties (Catalpa spp.)
- common apple (Malus pumila)
- evergreens
- ginkgo; female (Ginkgo biloba)
- goldenraintree (Koelreuteria paniculata)
- mulberry varieties (Morus spp.)
- pin oak (Quercus palustris)
- Norway maple (Acer platanoides)
- Siberian elm (Ulmus pumila)
- silver maple (Acer saccharinum)
- tree of heaven (Ailanthus altissima)

## Street Tree Permits

Property owners are required to obtain a permit before removing and/or planting street trees. Your property will be evaluated before a permit will be issued. Applications are available online at [www.LexingtonKY.gov/forestry](http://www.LexingtonKY.gov/forestry) or by calling the Urban Forestry Program at 425-2558 or by calling 3-1-1.

Low-income property owners may be eligible to receive financial assistance for street tree removal, stump grinding, and tree planting. Please call 425-2558 for more information.

Before planting, call 8-1-1 or 1-800-752-6007 to check for underground utilities.